



Supervisory Redistricting 2021

Santa Cruz County

Advisory Redistricting Commission (ARC21)

Informational Session

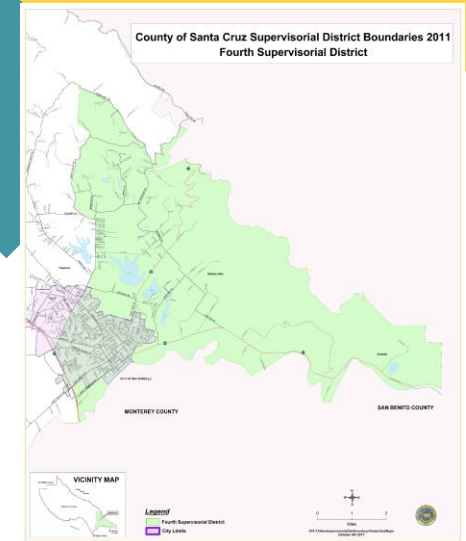
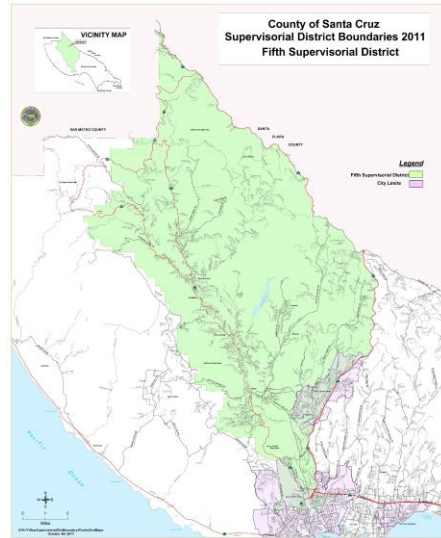
The purpose of these sessions is to inform the public on Santa Cruz County redistricting efforts.

In accordance with California Elections Code sections 21507-21508, no public input will be taken at these informational sessions.

We welcome public input at any of our regularly scheduled commission meetings and future public workshops and hearings and the COI section of our website.

To provide public input, please visit the redistricting website at:
SantaCruzCounty.us/Redistricting2021

Advisory Redistricting Commission



Kris Reyes

Third District

Supervisor Ryan Coonerty

James Mosher

Fifth District

Supervisor Bruce McPherson

Cheri O'Neil

First District

Supervisor Manu Koenig

Michael Watkins

Second District

Supervisor Zach Friend

Peter Radin

Fourth District

Supervisor Greg Caput

What is Redistricting? Why it Matters?



Redrawing District Boundaries

After every decennial census, district boundaries are redrawn so that each district is substantially equal in population.

Electing Representatives

Redistricting determines which neighborhoods and communities are grouped together into a district for purposes of electing a board member.

Population Equality

Redistricting is important in ensuring that each board member represents about the same number of constituents.

Your Voice

Redistricting has been used at times to exclude communities from political power. By fully participating in and monitoring the redistricting process, more communities may have a better opportunity to elect candidates of their choice and voice their needs and interest.

Different Redistricting Efforts

State

- Congressional, State Senate, State Assembly, and Board of Equalization

Counties

- 58 Counties with their own process

Cities

- District based

School Districts

- 10 school districts within Santa Cruz County

Other Districts

- Water districts, community college districts, etc.

Line Drawing Criteria by Order

The Commission must follow these criteria when drawing district maps in this order:

1 – Equal Population

Districts must be of equal population

2 – Voting Rights Act

Districts must comply with the Voting Rights Act to ensure that minorities have an equal opportunity to elect representatives of their choice.

3 – Contiguity

Districts must be drawn contiguously so that all parts of the district are connected to each other.

4 – Communities of Interest

Districts must maintain the geographic integrity of neighborhoods and communities of interest to the extent possible.

5 – Integrity of Cities

To the extent possible, districts must minimize division of cities or census designated places.

6 – Identifiable Boundaries

Boundaries must be easily identifiable and, if possible, bound by natural/artificial barriers, streets, and/or county lines.

7 – Geographical Compactness

Districts must be geographically compact to the extent possible

8 – Political Parties

To the extent possible districts must not favor or discriminate against any political party.

Communities of Interest (COI)

Communities of Interest

- A COI is a concentrated population which shares common social and economic interests that should be included within a single district for purposes of its effective and fair representation.

Defining your Community

- People can belong to multiple COIs. Your community can be defined by the geography, by boundaries, and/or by landmarks.
- What issues do you and your neighbors care about?
- How does influencing the maps help your cause?

Participating in the Process

- Provide public input at meetings and/or submit your comments to the commission.
- Tells us about your COI and map it using the mapping tools on our website.

Timeline/Phases

July – August

Access and Outreach

Website, Social Media

Redistricting Basics Toolkit

Public Education Workshop

Aug 16 – Legacy data (unformatted not apportioned)

October

Line Drawing and Mapping Work

Line Drawing Meetings

ARC21 commissioners to draft plans and maps

September

Involvement and Engagement

Online COI Tools

Public COI Input Workshops

Apportioned Legacy data expected

Sept 30 – PL 94-171 data released

October - December

Public Hearings and Map Adoption

Board to consider draft plans and maps

Dec 15 – Map Adoption Deadline

Get Involved



Santa Cruz County

Santacruzcounty.us/Redistricting2021



California

WeDrawTheLinesCA.org



Cities and Other Special Districts